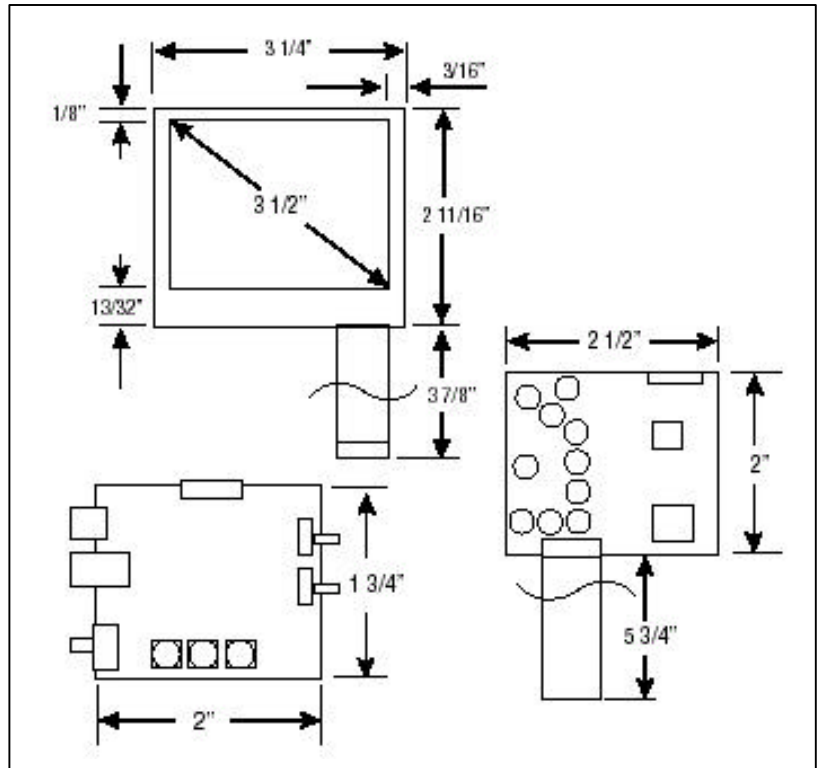


LCD35L

TECHNICAL SPECIFICATIONS

3.5" TFT-LCD COLOR
OPEN FRAME
MONITOR WITH LED
BACKLIGHT



FEATURES

- Flip Image Switch
- Mirror Image Switch
- Anti-glare
- LED Backlight
- NTSC/PAL Auto-switch

SPECIFICATIONS

DISPLAY:	3.5" Color TFT-LCD Active Matrix
INPUT SIGNAL:	Composite, NTSC/PAL (Auto Switch)
DOT FORMAT:	480 x 234
BACKLIGHT:	LED
BRIGHTNESS RATING:	200 NIT
CONTRAST RATIO:	150:1
VIEWING ANGLE (L/R/T/B):	45°/45°/110°/30°
POWER REQUIREMENTS:	12VDC @ 110mA
DIMENSIONS (HxWxD):	2 11/16" x 3 1/4" x 3/16"
DRIVER BOARD (HxWxD):	2" x 2 1/2" x 9/32"
CONTROL BOARD (HxWxD):	1 3/4" x 2" x 1/2"
MONITOR MOUNTING:	Module: None, PC Board: Screw
OPERATING TEMPERATURE:	0° ~ 60°C
STORAGE TEMPERATURE:	-25° ~ 80°C

*Specifications subject to change without notice.

Miller Technologies
109 Fairytale Lane
Surf City, NC 28445

Miller
Technologies

www.millertech.com

Pho: (910) 328-2829
Fax: (910) 328-5494
Email: info@millertech.com